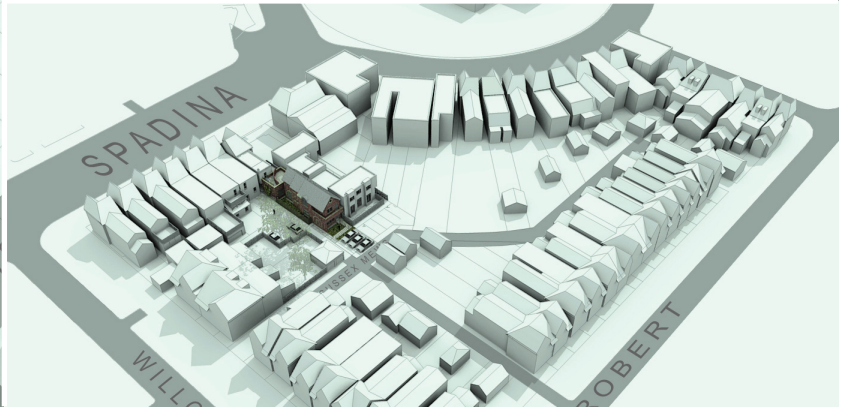


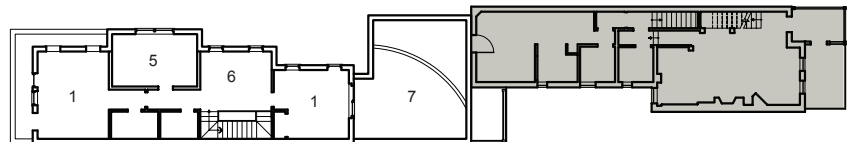
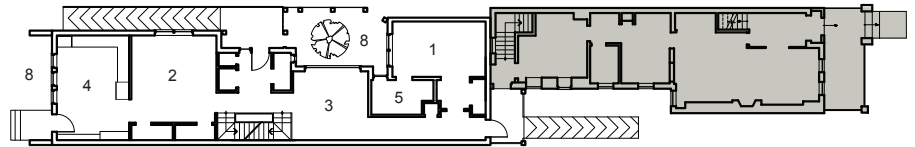
Laneway House

Toronto, ON

University



Originally a laneway house, this controversial project underwent several design iterations in response to concerns expressed by neighbours and the Planning Department. Now a rear addition to a historically-listed house, its final design is influenced by the neighboring Victorian style accented by the Client's desire for a large and whimsically circular window overlooking their garden.



AREA 2, 200 sf
BUDGET Withheld
STATUS On Hold

- 1 BEDROOM
- 2 DINING
- 3 LIVING
- 4 KITCHEN
- 5 BATHROOM
- 6 DEN
- 7 TERRACE
- 8 GARDEN

■ EXISTING DWELLING

LaPointe

ARCHITECTS

www.lapointe-arch.com